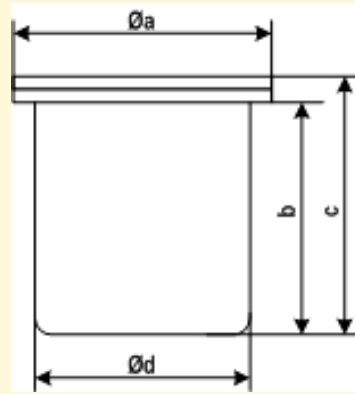
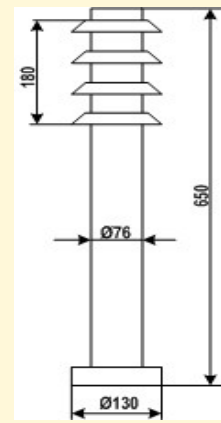


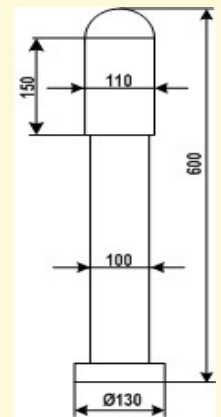
Landscape illuminating lamp KIB-0001LL



Landscape illuminating lamp KIB-0002LL



Landscape illuminating lamp KIB-0003LL



Landscape illuminating lamp KIB-0004LL



Lighting parameters							
Color of light-emitting diodes (LED)	Warm white	Natural white	Cold white	R	G	B	RGB
Luminous efficacy, lumen per watt	100	114	130	60	90	39	45
Quantity of light-emitting diodes	Projector light flux, lm						
3	300	342	390	180	270	117	135
6	600	684	780	360	540	234	270
9	900	1026	1170	540	540	450	405
12	1200	1368	1560	720	720	600	540

Quantity of light-emitting diodes	Sizes of body, mm				Weight, kg
	a	b	c	d	
3	89	104	110	60	2,0
6	174	90	110	115	2,5
9	240	240	260	195	3,5
12	240	240	260	195	3,5

Illuminating lamps with aluminum casting for the ground installation, on pavement, roadway. Tempered protective glass with silicone sealant protects against moisture penetration into the frame body.

The illuminating lamps design that are used guarantee high mechanical resistance and high resistance to penetration of moisture and dust.

In updating "RGB" it is possible to control by color and brightness via DMX 512 protocol.

The illuminating lamp is used for architectural and landscape lighting and to create color light effects for different purposes as well.

Technical parameters					
Parameter	Value	Parameter	Value	Parameter	Value
Performance life, hour	> 50 000	Voltage power, V	= 12 V or = 24V	Power consumption, W	From 3,15 to 12,6
Temperature rating, °C	From -20 to +45	Relative degree of humidity, %	From 10 to 90	Protection level	IP 65

Lighting parameters							
Color of light-emitting diodes (LED)	Warm white	Natural white	Cold white	R	G	B	RGB
Luminous efficacy, lumen per watt	100	114	130	60	90	39	45
Quantity of light-emitting diodes	Projector light flux, lm						
3 x 0,35 A	300	342	390	180	270	117	135
3 x 0,7 A	540	615	702	360			
3 x 1,0 A	750	855	975	540			

Body frame of illuminating lamp is made of stainless steel and transparent cap made of polycarbonate.

The design of illuminating lamp and used materials guarantee a high mechanical resistance and high moisture penetration and dust resistance.

In updating "RGB" it is possible to control by color and brightness via DMX 512 protocol.

Illuminating lamp is used for landscape lighting.

Technical parameters					
Parameter	Value	Parameter	Value	Parameter	Value
Performance life, hour	> 50 000	Voltage power, V	= 12 V or = 24 V	Power consumption, W	From 3,15 to 12,6
Temperature rating, °C	From -20 to +45	Relative degree of humidity, %	From 10 to 90	Protection level	IP 65



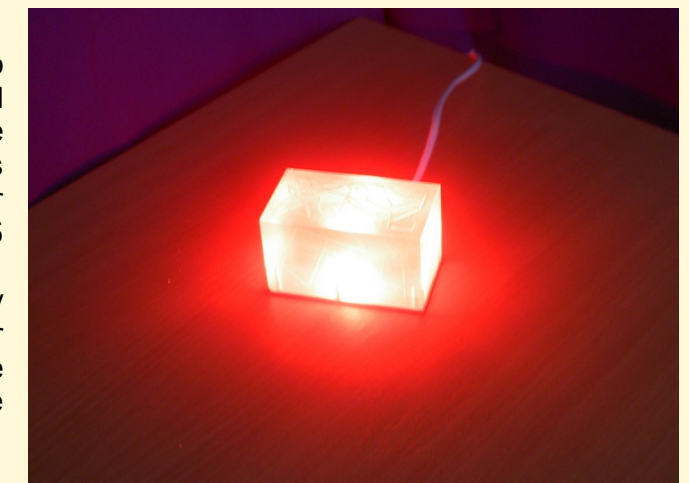
The main purpose of this illuminating lamp - to be "embedded" in the soil, pavement, asphalt or concrete road surface.

It is most commonly used to define walkways, driveways, etc.

"Body" of illuminating lamp is made of a single piece of translucent glass or hard polycarbonate. Necessary colour LED mounted on the heat sink, which is both a lower cap lamp.

Lower cap is tightly connected to the "body" of the illuminating lamp and the power supply cable run through the sealing sleeve. These measures provide the protection degree for illuminating lamp against IP65 environment.

Illuminating lamp powered by DC voltage from 6 to 12 V. Stabilizer LED supply current is located in the "body" of illuminating lamp next to the LED.



Technical parameters					
Parameter	Value	Parameter	Value	Parameter	Value
Performance life, hour	> 50 000	Voltage power, V	From = 6 V to =12 V	Power consumption, W	1,1
Temperature rating, °C	From -30 to +60	Relative degree of humidity, %	From 10 to 90	Protection level	IP 65